



• SIGN FABRICATORS • DIGITAL PRINT & PHOTO LABS • CUSTOM PICTURE FRAMER • PROFESSIONAL ARTIST • HOBBYIST • ARTS & GRAPHIC MATTING

# Fletcher 3100<sup>®</sup> Multi-Material Cutter

Interchangeable  
Cutting Head Technology

Score &  
Break-Out Feature  
For Glass & Acrylic



2903

**Matboard**  
4, 8, 12 ply

**MDF**  
Up to 3/32" (2.4mm)

**Aluminum  
Sheets**  
Up to .040"

**Backing  
Board**  
Up to 3/32" (2.4mm)

**Glass**  
Up to 1/4" (6mm)

**PVC**  
Up to 1/4" (6mm)

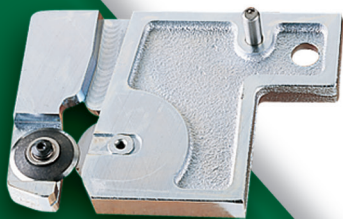
**Acrylic**  
Up to 1/4" (6mm)

**Corrugated  
Plastics**  
Up to 1/2" (13mm)

**Foamboard**  
Up to 1/2" (13mm)

## Accurate. Versatile. Durable. Profitable. Proven.

Since 1868, Fletcher-Terry has been revolutionizing advanced panel cutting for numerous global industries. The versatile F-3100 Multi-Material Cutter features a spring-loaded cutting assembly with interchangeable pillar posts allowing you the convenience of quickly switching from one material to another.



Part # 12-212

NEW Interchangeable Cutting Head  
Cuts ACM Up to 2mm

**Fletcher Business Group**

[www.fletcher-terry.com](http://www.fletcher-terry.com)

Authorised Fletcher  
Distributor



[www.lionpic.co.uk](http://www.lionpic.co.uk)

# Fletcher F3100

www.fletcher-terry.com

IGN FABRICATORS • DIGITAL PRINT AND PHOTO LABS • CUSTOM PICTURE FRAMER • PROFESSIONAL ARTIST • HOBBYIST • ARTS & GRAPHIC MATTING

**Plastics & Acrylics**  
Up to 6mm / 1/4"

**Gator Board**  
Up to 13mm / 1/2"

**Aluminium sheets**  
Up to 1.0mm / 0.04"  
ACP Up to 2.0mm / 0.08"

**MDF**  
Up to 2.4mm / 3/32"  
ACM Up to 2mm / 0.078"

**Glass**  
Up to 6mm / 1/4"

Interchangeable  
Cutting Heads



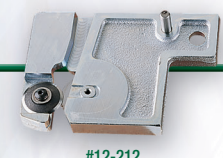
#12-213  
Score Blade #05-712



#12-211  
Knife Blade #05-004



#12-224  
Wheel Set #05-716 Bearings #12-215

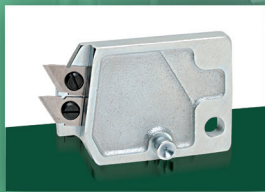


#12-212  
Wheel Set #05-715 Bearings #12-215



#12-214  
Wheel #02-120

**PVC, Fomex**  
Up to 6mm / 1/4"



#12-225  
Knife Blade #05-711

## Unique Performance Features

- Interchangeable Cutting Head technology
- Cuts clean & debris-free
- Mounts on wall or free-standing
- Cuts wide range of substrates

## F-3100 Technical Spec

**Cutting Head:** Rides on high tensile strength steel tube, hard chrome plated and polished, resulting in smoother gliding action for consistent cutting head performance and longevity.

**Vertical Bars:** Rails do not bend or flex during the cutting process for straight, accurate cutting over the entire substrate height.

**Material Clamping System:** Patented lever-type clamping system that secures in place various substrate heights up to 1600mm / 63" to prevent buckling and shifting of material during the cutting process.

**Laser Alignment:** A laser sight line system for accurate cutting is available as an option.

## Fletcher F-3100

2903 F3100 Multi-Material Cutter 04-715

Includes User Manual and:

Pillar Posts:

- Mat/Foamboard Blades 12-211
- Plastic 12-213
- MDF 12-212
- Glass 12-214

- Mat/Foamboard Blades x 10 05-004
- Plastic Blades x 10 05-712
- Steel 120° Glass Wheel x 10 02-120
- MDF Cutting Wheel Set x 1 05-715
- Wall Mounting Brackets x set

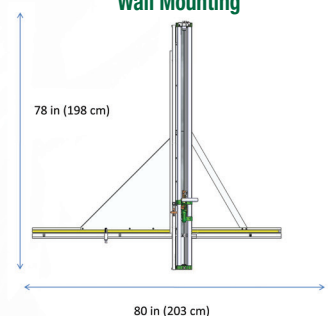
## Accessories

- 2755 TC Glass Wheel 03-126
- 2780 Steel Glass Wheel (10) 02-120
- 2751 PVC Cutting Blades (10) 05-711
- 900 M-3000 Blades (10) 05-001
- 2749 Plastic Scoring Blade (10) 05-712
- 2751 M81 Mat Blade (10/tube) 05-711
- 2941 Utility Blades (100/box) 05-004
- 2942 MDF Cutting Wheel Set 05-715
- 2940 3100 Measuring Stop 04-114
- 05-716 Aluminum Cutting Wheel Set
- 04-101 Mounting Stand

## Stand Mounting



## Wall Mounting



When the F-3100 is installed on the stand, the handle is app. 645mm from the floor.

## F-3100 is ideal for users in:

- Sign & Graphic
- Picture Framing
- Digital Printers
- Glass & Glazing
- Photo Labs

Check prices at: [www.lionpic.co.uk](http://www.lionpic.co.uk)

**Fletcher Business Group**

www.fletcher-terry.com

Authorised Fletcher  
Distributor



www.lionpic.co.uk

V.2 Updated May 2017